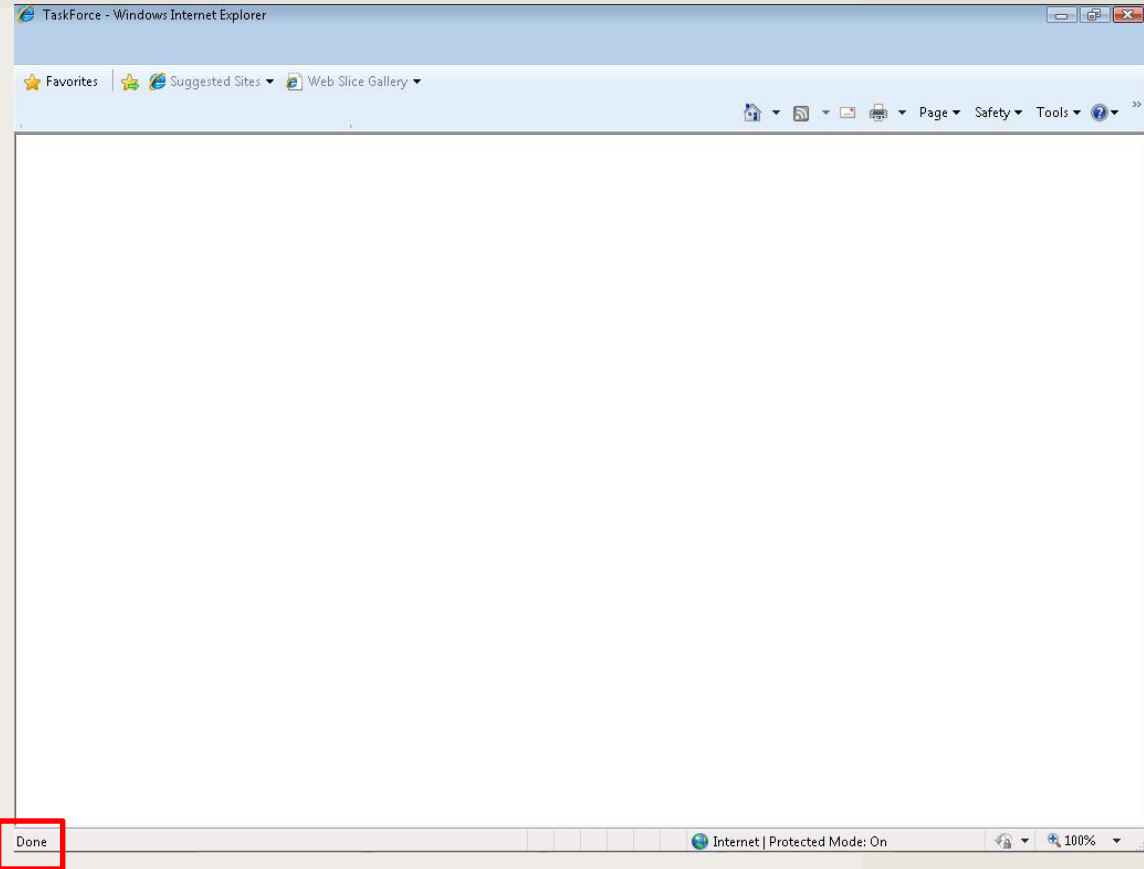


Internet Explorer 8 Compatibility View

This option is for Internet Explorer 8 users that get a blank page when loading the live viewer for the DVR

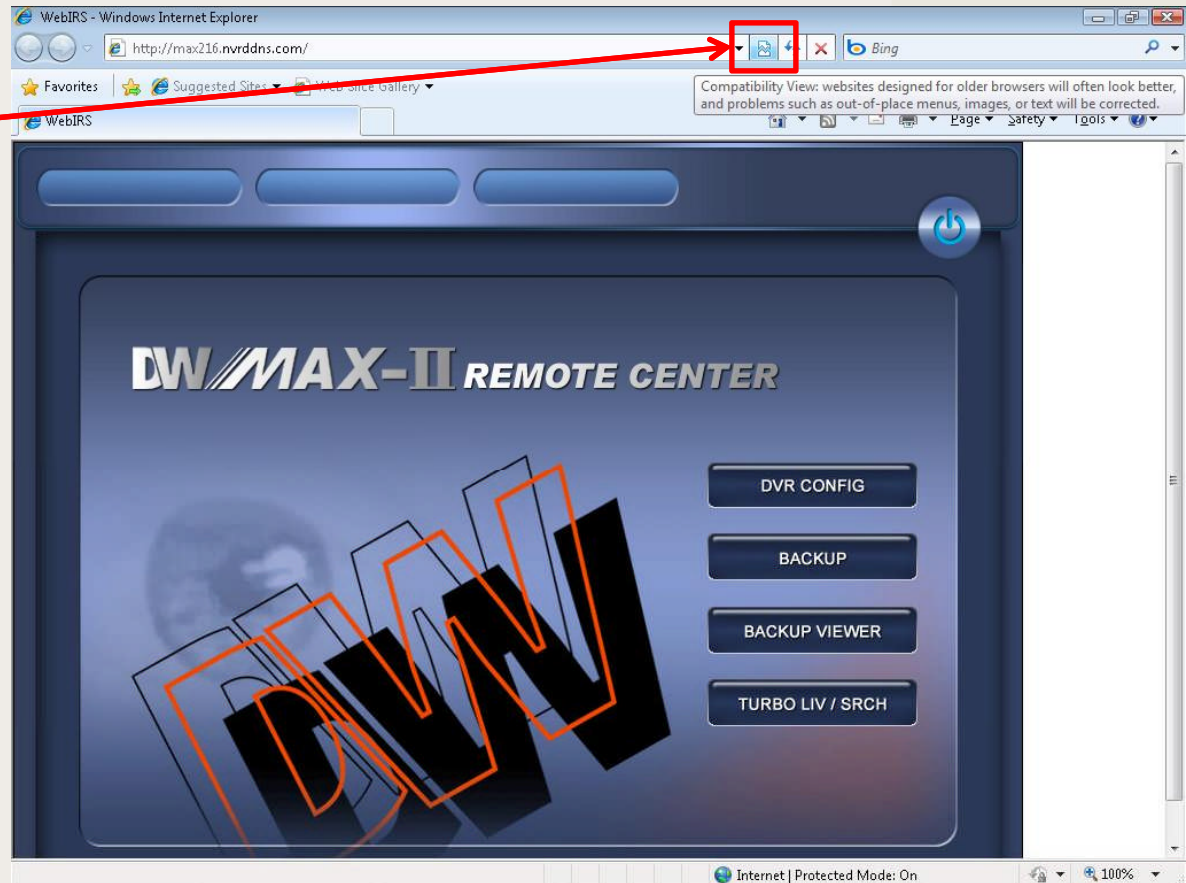


[If you need technical assistant please Call:866-446-3516 option#2](tel:866-446-3516)

Internet Explorer 8 Compatibility View

Step 1

From the DVR Homepage click the Compatibility View Icon

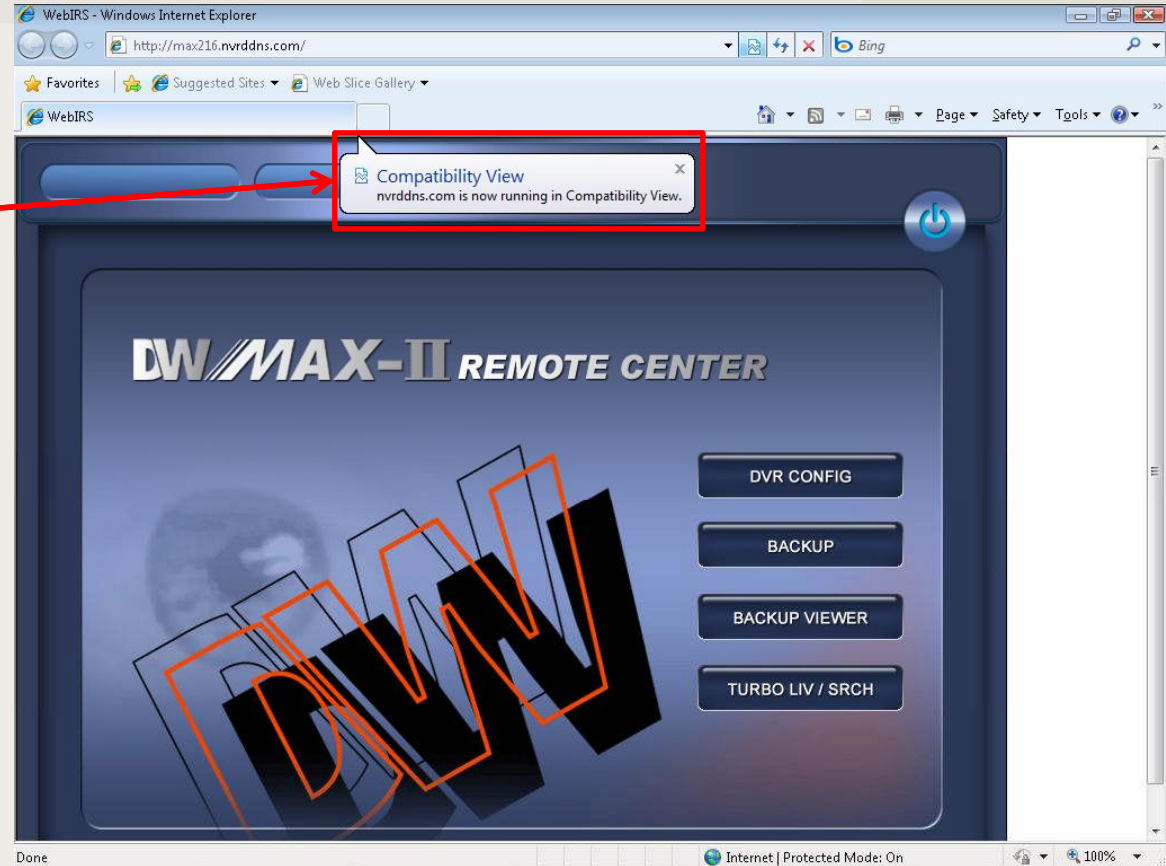


[If you need technical assistant please Call:866-446-3516 option#2](tel:866-446-3516)

Internet Explorer 8 Compatibility View

Step 2

Wait for the Homepage to refresh and you should see the “Compatibility View” Pop-up show up.



[If you need technical assistant please Call:866-446-3516 option#2](tel:866-446-3516)

Internet Explorer 8 Compatibility View

Step 3

Go to the live viewer

If prompted to install active x, do so and you should see the live viewer load successfully.

Enter any information needed

Click **Connect**



[If you need technical assistant please Call:866-446-3516 option#2](tel:866-446-3516)